

**VOLUME 14, NOMOR 2 AGUSTUS 2020**

**ISSN: 1907-8056  
e-ISSN: 2527-5410**

# **AGROINTEK**

**JURNAL TEKNOLOGI INDUSTRI PERTANIAN**

**JURUSAN TEKNOLOGI INDUSTRI PERTANIAN  
UNIVERSITAS TRUNOJOYO MADURA**

## **AGROINTEK: Jurnal Teknologi Industri Pertanian**

Agrointek: Jurnal Teknologi Industri Pertanian is an open access journal published by Department of Agroindustrial Technology, Faculty of Agriculture, University of Trunojoyo Madura. Agrointek: Jurnal Teknologi Industri Pertanian publishes original research or review papers on agroindustry subjects including Food Engineering, Management System, Supply Chain, Processing Technology, Quality Control and Assurance, Waste Management, Food and Nutrition Sciences from researchers, lecturers and practitioners. Agrointek: Jurnal Teknologi Industri Pertanian is published twice a year in March and August. Agrointek does not charge any publication fee.

Agrointek: Jurnal Teknologi Industri Pertanian has been accredited by ministry of research, technology and higher education Republic of Indonesia: 30/E/KPT/2019. Accreditation is valid for five years. start from Volume 13 No 2 2019.

### **Editor In Chief**

Umi Purwandari, University of Trunojoyo Madura, Indonesia

### **Editorial Board**

Wahyu Supartono, Universitas Gadjah Mada, Yogyakarta, Indonesia

Michael Murkovic, Graz University of Technology, Institute of Biochemistry, Austria

Chananpat Rardniyom, Maejo University, Thailand

Mohammad Fuad Fauzul Mu'tamar, University of Trunojoyo Madura, Indonesia

Khoirul Hidayat, University of Trunojoyo Madura, Indonesia

Cahyo Indarto, University of Trunojoyo Madura, Indonesia

### **Managing Editor**

Raden Arief Firmansyah, University of Trunojoyo Madura, Indonesia

### **Assistant Editor**

Miftakhul Efendi, University of Trunojoyo Madura, Indonesia

Heri Iswanto, University of Trunojoyo Madura, Indonesia

Safina Istighfarin, University of Trunojoyo Madura, Indonesia

### **Alamat Redaksi**

DEWAN REDAKSI JURNAL AGROINTEK

JURUSAN TEKNOLOGI INDUSTRI PERTANIAN

FAKULTAS PERTANIAN UNIVERSITAS TRUNOJOYO MADURA

Jl. Raya Telang PO BOX 2 Kamal Bangkalan, Madura-Jawa Timur

E-mail: [Agrointek@trunojoyo.ac.id](mailto:Agrointek@trunojoyo.ac.id)



## THE LIMIT OF RED SEAWEED (*Euचेuma cottonii*) SUBSTITUTION IN SNAKEHEAD FISH (*Channa striata*) NUGGETS BASED ON SENSORY EVALUATION

Krishna Purnawan Candra<sup>\*</sup>, Hendra Saputra, Arboby Gunawan, Bernatal Saragih, Hudaida Syahrumsyah, Yuliani

*Department of Agricultural Product Technology, Faculty of Agriculture, Mulawarman University, Samarinda, Indonesia*

### Article history

*Submitted:*  
23 April 2020  
*Revised:*  
14 July 2020  
*Accepted:*  
18 July 2020

### Keyword

*Snakehead fish;  
seaweed; Euचेuma  
cottonii; nugget;  
Channa striata*

### ABSTRACT

*Snakehead fish (Channa striata), a freshwater fish, is known to have functional properties in helping the process of healing burns and wounds after surgery. Besides that, the use of seaweed as a source of food fiber is also widely reported. This research was conducted to design fiber-rich fish nuggets. The purpose of this study was to determine the maximum levels of seaweed substitution in the processing of snakehead fish nuggets based on sensory properties. Single-factor experiment (seaweed, Euचेuma cottonii, substitution) arranged in a Completely Randomized Design with four replications was applied in this study. The parameters observed were hedonic and hedonic quality sensory properties for the attributes of color, aroma, texture, and taste of nuggets. The data obtained were analyzed by the Friedman Test, followed by the Wilcoxon Rank Test to detect the differences between treatments. Treatment of up to 75% seaweed substitution (0, 25, 50, and 75%) decreases significantly ( $p < 0.05$ ) the hedonic sensory acceptance of the snakehead fish nuggets for all attributes except the texture which shows an increase. Whereas, the treatment with substitution of seaweed in the narrow percentage of 0, 5, 10, 15, and 20% gave an expected result, which showed that there was no significant difference ( $p > 0.05$ ) of the hedonic sensory response for the overall acceptance. Nevertheless, 15% of seaweed substitution provides the best hedonic sensory response for overall acceptance. These results indicate that 15% of seaweed (Euचेuma cottonii) substitution is recommended for use in the processing of snakehead fish nuggets.*

© all rights reserved

---

<sup>\*</sup> Corresponding author

Email : candra@faperta.unmul.ac.id

DOI 10.21107/agrointek.v14i2.7123

## INTRODUCTION

Snakehead fish (*Channa striata*) is known as freshwater fish found in South East Asia with the local Indonesian name of gabus or haruan (Listyanto and Andriyanto 2009, Duong et al. 2019). The fish is harvested from a natural environment like tides, lakes, streams, rivers, and wet rice plantations. These snakehead fish are still difficult to culture because of the high mortality in the larvae stage (Listyanto and Andriyanto 2009, Bijaksana 2012, Hidayatullah et al. 2015). Functional properties of the snakehead fish are reported for helping the process of healing burns and wounds after surgery (Rahayu et al. 2016). Striatin is the albumin free bioactive protein fraction isolated from snakehead fish (*Channa striata*). However, it is responsible for accelerating wound healing and serum albumin level recovery (Rahayu et al. 2016). Intake of snakehead fish albumin was reported to heal the wound (Fitriyani and Deviarni 2013, Putri and Agustina 2016) and increased albumin and creatinine (Sulistiyowati et al. 2008) and regenerate pancreas cells (Aisyatussoffi and Abdulgani 2013). Protein and albumin content of the snakehead fish meat is about 20 g and 63-107 mg per 100 g, respectively (Chasanah et al. 2015).

Because of the functional properties of the snakehead fish meat, creating a processed fish product from the snakehead fish will provide fish-based functional food. Cracker (Yuliani et al. 2018) and nuggets (Yulianti and Mutia 2018) are two types of favorite processed fish products. Nuggets are a processed fish product using fish meat minced or surimi at a minimum of 30%, mix with flour and other materials with binding flour (breadcrumbs), and coated with batter mix (Badan Standardisasi Nasional 2013). Like other freshwater fish, snakehead fish meat is very soft. It needs filling substances to have better performance, especially the texture.

*Euचेuma cottonii* is one type of a red seaweed, which belongs to carrageenanophytes seaweed (Hoffmann et al. 1995) that often used as the filling substance for food product like a wet noodle (Lubis et al. 2013), and nugget (Haryanto 2014, Astuti and Sugiarto 2015, Masita and Sukei 2015, Aditomo et al. 2017). *E. cottonii* is easily found in East Kalimantan (Candra et al. 2011), so it is crucial to increase the economic value by promoting its using diversity. The use of seaweed will enrich the food product by fiber (Astawan et al. 2005), composed of carrageenan and cellulose (Hoffmann et al. 1995), which is very important for the intestine health and digestion system. The *E. cottonii* was also reported having anti-inflammation (Abu Bakar et al. 2015) and anti-tumor activity (Shamsabadi et al. 2013, Sakthivel and Devi 2019).

Masita and Sukei (2015) showed that the addition of 15% of *E. denticulatum*, a type of red seaweed, increased the texture quality of snakehead fish nugget, however, until now there is no report on the use of *E. cottonii* as filler in fish nugget produce. This report describes the sensory acceptance of snakehead fish nugget following substitution other red seaweed, i.e., *E. cottonii*. The optimum substitution of the *E. cottonii* on the sensory acceptance was determined.

## METHODS

### Materials

Snakehead fish in medium-size and dried *E. cottonii* (EC) as bought from a traditional market, while other materials like salt, wheat flour, egg, garlic, onion, shallot, pepper, breadcrumbs, and vegetable oil were obtained from mini-market in Samarinda. H<sub>2</sub>SO<sub>4</sub>, NaOH, Na<sub>2</sub>S<sub>2</sub>O<sub>3</sub>, HCl, K<sub>2</sub>SO<sub>4</sub>, phenolphthalein, ethanol absolute, and petroleum ether were provided by Sigma.

## Experimental Design and Data Analysis

In this research, the optimal substitution of EC was determined. This research was conducted in two steps, i.e., 0-75% and 0-20% substitution of EC. Single-factor (substitution of EC) experiment was arranged in Completely Randomized Design, and each treatment was replicated by four times. Each sample was prepared in 100 g mixture of snakehead fish meat and EC with substitution of 0, 25, 50, and 75 g for the first step of experiment and continued by the second experiment by using EC substitution of 0, 5, 10, 15 and 20%. Sensory hedonic and quality hedonic responses for color, aroma, texture, and taste were determined. Data were analyzed by Friedman test continued by Wilcoxon Sign Rank test for the post hoc test.

## Procedure

### *Preparation of fish meat puree*

Fresh snakehead fish was weeded to separate the mucus, scales, head, tail, and fish droppings then washed again using running water. The skin and bone were then removed, and the white meat was added by lime juice to remove the fishy smell. The white meat was then washed once again, then drained. The fish meat puree was prepared by minced the meat using blender by added 10 % (w/w) ice cubes.

### *Preparation of seaweed puree*

Dried seaweed was cleaned using flowing water then soaked in the water for two days to refresh the seaweed, while the water changed each at 12 h. The wet seaweed was washed using flowing water once again, then cut to small pieces. The seaweed puree was then prepared by grinding using a blender.

### *Nugget producing*

The nugget producing was started by mixing the materials followed by several steps, i.e., steamed, cooled, molded, dipped in

the batter mix and rolled in breadcrumbs, and fried.

### *Mixing and steaming*

Fish meat and seaweed puree of 100 g were mixed then added by 3 g salt, 30 g wheat flour, 10 g egg, and the rest ground ingredients, i.e., 2 g garlic, 3 g shallot, and 0.25 g pepper. The mixture was added by 20 mL of fish broth then ground until a homogenized mixture was attained, then steam for 30 min. The fish broth was prepared by boiling 100 g in 100 mL of water.

### *Cooling, molding, and breadcrumbs rolling*

The dough was cooled in room temperature for 15 min until mild hard then molded in the form nugget in size of 2 x 3 x 1 cm. The nuggets were dipped in batter mix (shaken egg) then rolled in breadcrumbs.

### *Frying*

Nuggets were fried for two minutes in hot oil until the golden brown color, and then the rest oil was drained.

## Sensory test

The hedonic and quality hedonic sensory test was performed by 25 semi-trained panelists (students who have passed in Sensory Test lecture). The panelists were directed to the test procedure prior to taking the test. A five scores level was used in the sensory test.

## Proximate analysis

Proximate analysis, including moisture, fat, protein, ash, and carbohydrate content (Sudarmadji et al. 2010), was applied for the nuggets provided by treatment showing the best hedonic sensory test for overall acceptance.

## RESULT AND DISCUSSION

The hedonic sensory response of snakehead fish nugget (SFN) was affected

significantly ( $p < 0.05$ ) by the *E. cottonii* (EC) substitution up to 75%. The higher the EC substitution, the lower the hedonic sensory response of SFN except for texture that showed an opposite trend. Higher EC substitution increased the texture score (Table 1) related to the increased sensory acceptance of texture. The hedonic sensory response median for color, aroma taste, and overall acceptability decreased from 4 (like) at control (0% of EC substitution) to 3 (rather like) at 75% of EC substitution. On the other hand, the hedonic sensory response for texture increased from 3 (rather like) to 4 (like). The trend of the decreasing of the hedonic sensory response for color, aroma, taste, and overall acceptability and the increase for texture, as well as the difference of quality hedonic sensory score between the level of seaweed substitution level as mean rank was shown in Figure 1.

A broad range substitution of cellulosic substance in nuggets showed a similar level of hedonic sensory response of SFN in this research, except the hedonic sensory response for texture. Substitution of banana corm puree at 25-75% gave a relatively same (not significantly different) level on the hedonic sensory response, i.e., rather like, for color, aroma, texture, and taste of skipjack fish (*Katsuwonus pelamis* L.) nugget (Pade 2018). The decreased sensory hedonic response of snakehead fish nugget substituted by straw mushroom (*Volvariella volvaceae*) in a broad range of 30-100% was also reported (Prastia et al. 2016). However, the use of bamboo shoots as other cellulose food in catfish nugget showed the opposite result. The substitution of bamboo shoots up to 30% increased the hedonic sensory for the overall acceptance of the catfish nugget (Silaban et al. 2017). The cellulose type used as the filler or substituent may be responsible for the different performances of fish nuggets.

Table 1. Effect of red seaweed substitution (*E. cottonii*) up to 75% on the sensory response of snakehead fish nugget

Attribute	Substitution of the red seaweed (%)				$p^*$
	0	25	50	75	
<i>Hedonic</i>					
Color	4.0 c	4.0 b	3.0 a	3.0 a	0.0005
Aroma	4.0 c	4.0 b	3.0 a	3.0 a	0.0005
Texture	3.0 a	3.0 a	4.0 b	4.0 c	0.0005
Taste	4.0 c	4.0 b	3.0 a	3.0 a	0.0005
Overall acceptance†	4.0 c	4.0 b	3.0 a	3.0 a	0.0005
<i>Hedonic quality</i>					
Color	4.0 d	4.0 c	3.0 b	3.0 a	0.0005
Aroma	4.0 c	4.0 b	3.0 ab	3.0 a	0.0005
Texture	3.0 a	3.0 b	4.0 c	4.0 d	0.0005
Taste	4.0 c	4.0 b	3.0 b	2.5 a	0.0005

Note: The results were expressed as median from 100 data derived from the 4 replications assessed by 25 semi-trained panelists., except 400 data for overall acceptance derived from all attributes (color, aroma, texture, and taste). The data were analyzed by the Friedman test (\*). Data within the same row, followed by a different letter, were significantly different (Wilcoxon Sign Rank Test,  $p < 0.05$ ). The formula is based on 100 g of mixing of meat fish and seaweed. Hedonic sensory scale 1-5 for *very dislike* to *liking very much*. Hedonic quality sensory scale 1-5 for **color** (*brownies yellow, yellowish-white, mild yellow, yellow, golden yellow,*), **aroma** (*very unscented of fish, not scented of fish, rather scented of fish, scented of fish, very scented of fish*), **texture** (*very chewy, chewy, rather chewy, rather soft, soft*), **taste** (*very tasteless of fish, tasteless of fish, rather tasted of fish, fish tasted, very tasted of fish*).

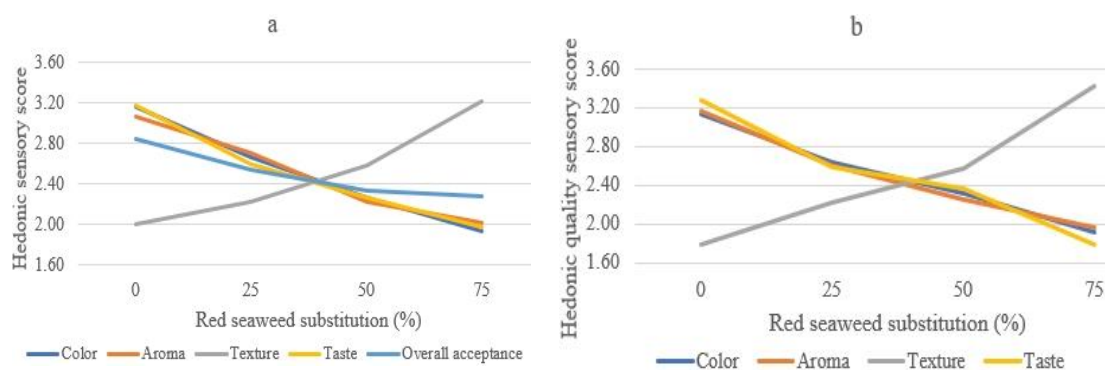


Figure 1. Changing trend of hedonic and quality hedonic responses of snakehead fish nugget with red seaweed (*Eucheuma cottonii*) substitution up to 75%. The data were presented as mean rank. The sensory scale is referred to as note in Table 1. Hedonic sensory response (a), hedonic quality sensory response.

The data provided by the first experiment show that the broad range of seaweed substitution (0-75%) is the main cause of the decreasing response of the hedonic sensory. At the first level of treatment (25% of EC substitution), a significant decrease of the hedonic sensory response was already determined, then followed by a higher level of substitution. The use of carrageenanophytes food source may use in a narrow range, with a maximum of about 20%.

Then a narrow range of seaweed substitution, 0-20%, was experimented. The results showed that the hedonic sensory response for color, aroma, and taste was not significantly affected by up to 20% of the EC

substitution, except the texture in which it showed a significant increase (Table 2.). The trend of sensory response change caused by up to 20% of EC substitution is presented in Figure 2 as means of rank.

This finding adds the information that substitution or addition of cellulosic or protein as water content binder or filler material in a narrow range could be applied in fish nuggets produce. It significantly affected the nugget produce performance. Some reports even showed that the use of such water content or filler material in a small percentage gave a better performance. The 15% of EC substitution is recommended in snakehead fish nugget produce.

Table 2. Effect of red seaweed (*E. cottonii*) substitution up to 20% on the sensory response of snakehead fish nuggets

Attribute	Substitution of the red seaweed (%)					<i>p</i> *
	0	5	10	15	20	
<i>Hedonic</i>						
Color	4.0	4.0	4.0	4.0	4.0	0.218
Aroma	4.0	4.0	4.0	4.0	4.0	0.212
Texture	4.0 a	4.0 a	4.0 ab	4.0 a	4.0 b	0.046
Taste	4.0 ab	4.0 ab	4.0 a	4.0 b	4.0 a	0.021
Overall acceptance ‡	4.0	4.0	4.0	4.0	4.0	0.249
<i>Hedonic quality</i>						
Color	3.0 a	4.0 b	4.0 b	4.0 ab	4.0 b	0.018
Aroma	4.0	3.0	3.0	4.0	3.0	0.732
Texture	4.0 b	4.0 a	4.0 ab	4.0 ab	4.0 ab	0.009
Taste	4.0 b	3.0 a	3.0 a	4.0 b	3.0 a	0.0005

Note: same as the note in Table 1.

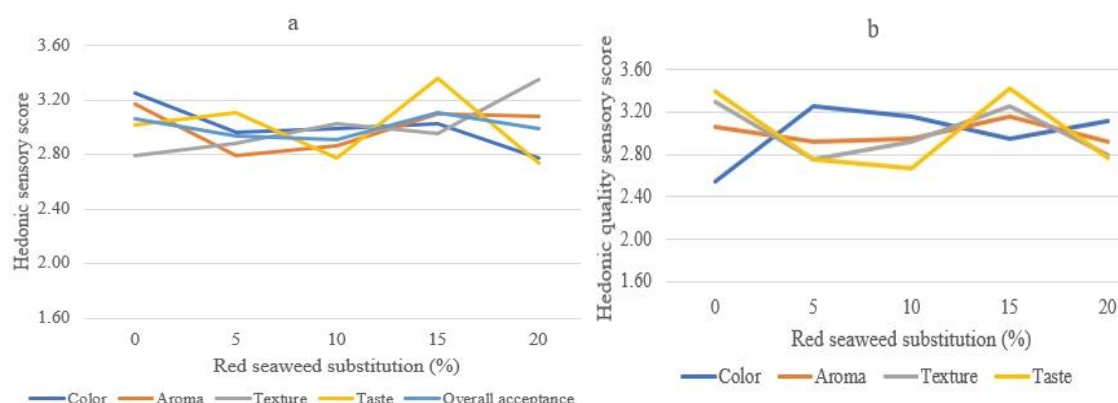


Figure 2. Changing trend of hedonic and quality hedonic responses of snakehead fish nugget with red seaweed (*Eucheuma cottonii*) substitution up to 20%. The data were presented as mean rank. The sensory scale is referred to the note in Table 1. Hedonic sensory response (a), hedonic quality sensory response (b).

The chemical properties of the 15% of EC substituted un-fried snakehead fish nuggets (taken from three replications) were  $56.76 \pm 2.44$ ,  $12.20 \pm 0.44$ ,  $2.75 \pm 0.35$ ,  $25.18 \pm 0.93$  and  $2.10 \pm 0.54\%$  for water content, protein, fat, carbohydrate, and ash, respectively.

The use of 10% of soybean flour (Ofrianti and Wati 2013) and 20% of red seaweed (*E. denticulatum*) (Masita and Sukesu 2015) were shown better performance in snakehead fish nugget compare to the nugget without the filler addition (control). The use of 15% of cowpea also showed the best of tilapia fish nugget performance than the control. The

## CONCLUSION

*Eucheuma cottonii* (EC) is a potential filler in snakehead fish nugget produce. The 15-20% of EC substitution is recommended for an acceptable product. The 15% of EC substitution affects not significantly the sensory hedonic response for color, aroma, and texture, except taste that showed significantly better. At the same time, 20% of EC substitution showing significantly higher on the hedonic sensory response for texture compares to control (100% snakehead fish meat).

## REFERENCES

Abu Bakar, N., V. U. Anyanji, N. M. Mustapha, S. L. Lim, and S.

Mohamed. 2015. Seaweed (*Eucheuma cottonii*) reduced inflammation, mucin synthesis, eosinophil infiltration and MMP-9 expressions in asthma-induced rats compared to Loratadine. *Journal of Functional Foods* 19:710–722.

Aditomo, R. S., R. Nopianti, I. Widiastuti. 2017. Physicochemical and sensory characteristic of seaweed nugget with addition of carp (*Thynnichthys thynnoides*). *Fishtech Jurnal Teknologi Hasil Perikanan* 6:163–173. [Indonesian]

Aisyatussoffi, N., and N. Abdulgani. 2013. Effect on snakehead fish (*Channa striata*) extract intake on pancreatic histology structure and blood glucose content of hyperglycemic mouse (*Mus musculus*). *Jurnal Sains dan Seni Pomits* 2:1–6. [Indonesian]

Astawan, M., T. Wresdiyati, and A. B. Hartanta. 2005. The utilization of seaweed as a source of dietary fiber to decrease the serum cholesterol in rats. *HAYATI Journal of Biosciences* 12:23–27.

Astuti, R. D., and D. Sugiarto. 2015. Determination of zinc (Zn) and phosphor (P) in snakehead fish (*Channa striata*) nugget - red seaweed (*Eucheuma spinosum*). *Jurnal Sains dan Seni ITS* 4:C-80-C84.



- [Indonesian]
- Badan Standardisasi Nasional. 2013. SNI 7758:2013 Fish Nugget. Badan Standardisasi Nasional, Jakarta, Indonesia. [Indonesian]
- Bijaksana, U. 2012. Snakehead domestication, *Channa striata* Blkr, swamp water optimization efforts in South Kalimantan Province. *Jurnal Lahan Suboptimal* 1:92–101. [Indonesian]
- Candra, K. P., Sarwono, and Sarinah. 2011. Study on bioethanol production using red seaweed *Eucheuma cottonii* from Bontang sea water. *Journal of Coastal Development* 15:45–50.
- Chasanah, E., M. Nurilmala, A. R. Purnamasari, and D. Fithriani. 2015. Chemical composition, albumin content and bioactivity of natural and cultivated snakehead protein snakehead fish (*Channa striata*) protein extract. *Jurnal Pascapanen dan Bioteknologi Kelautan dan Perikanan* 10:123. [Indonesian]
- Duong, T. Y., S. Uy, P. Chheng, N. So, T. H. T. Tran, N. T. Thi, R. Pomeroy, and H. Egna. 2019. Genetic diversity and structure of striped snakehead (*Channa striata*) in the Lower Mekong Basin: Implications for aquaculture and fisheries management. *Fisheries Research* 218:166–173.
- Fitriyani, E., and I. M. Deviarni. 2013. Advantage of snakehead fish (*Channa striata*) albumin extract as cream material for wound healing. *Vokasi* 9:166–174. [Indonesian]
- Haryanto, Y. N. 2014. Effect of Different Concentration and Particle Size of Seaweed (*Eucheuma cottonii*) towards the Physical, Chemical, Sensory Characteristic, and Oil Absorption on Tilapia (*Oreochromis niloticus*) Fish. Bachelor thesis. Department of Food Technology. Universitas Katolik Soegijapranata Semarang. [Indonesian]
- Hidayatullah, S., Muslim, and F. H. Taqwa. 2015. Rearing of snakehead larvae (*Channa striata*) in plastic lined pond with different stocking density. *Jurnal Perikanan dan Kelautan* 20:61–70. [Indonesian]
- Hoffmann, R. A., M. J. Gidley, D. Cooke, and W. J. Frith. 1995. Effect of isolation procedures on the molecular composition and physical properties of *Eucheuma cottonii* carrageenan. *Food Hydrocolloids* 9:281–289.
- Listyanto, N., and S. Andriyanto. 2009. Snakehead (*Channa striata*) advantage of development and alternative of its aquaculture. *Media Akuakultur* 4:18. [Indonesian]
- Lubis, Y. M., N. M. Erfiza, Ismaturrahmi, and Fahrizal. 2013. Effect of seaweed concentration (*Eucheuma cottonii*) and flour types on wet noodle processing. *Rona Teknik Pertanian* 6:413–420. [Indonesian]
- Masita, H. I., and Sukesni. 2015. Effect of seaweed addition on fish nugget hardness. *Jurnal Sains dan Seni ITS* 4:29–31. [Indonesian]
- Ofrianti, Y., and J. Wati. 2013. Soybean flour as a contribution to the binder water content and organoleptic quality nugget fish corks (*Ophiocephalus striatus*). *Jurnal Sains Peternakan Indonesia* 8:159–168. [Indonesian]
- Pade, S. W. 2018. Acceptance level analysis of skipjack nugget (*Katsuwonus pelamis* L.) with addition of banana tuber). *Journal of Agritech Science* 2:90–95. [Indonesian]
- Prastia, A. Ali, and F. Hamzah. 2016. Production of straw mushroom (*Volvariella volvaceae*) nugget with addition of snakehead fish (*Channa striata*). *Jom Faperta* 3:1–10. [Indonesian]

- Putri, R. C. S., and W. Agustina. 2016. The effect of albumin extract *Channa striata* topical administration toward the acceleration of incision wound contraction on mice (*Rattus norvegicus*) strain Wistar. *Journal Nursing Care & Biomolecular* 1:45–50. [Indonesian]
- Rahayu, P., F. Marcelline, E. Sulistyaningrum, M. T. Suhartono, and R. R. Tjandrawinata. 2016. Potential effect of striatin (DLBS0333), a bioactive protein fraction isolated from *Channa striata* for wound treatment. *Asian Pacific Journal of Tropical Biomedicine* 6:1001–1007.
- Sakthivel, R., and K. P. Devi. 2019. Antioxidant, anti-inflammatory and anticancer potential of natural bioactive compounds from seaweeds. Pages 113–160 in Atta-ur-Rahman, editor. *Studies in Natural Products Chemistry*. First edition. Elsevier Inc., Amsterdam, The Netherlands.
- Shamsabadi, F. T., A. Khoddami, S. G. Fard, R. Abdullah, H. H. Othman, and S. Mohamed. 2013. Comparison of tamoxifen with edible seaweed (*Euचेuma cottonii* L.) extract in suppressing breast tumor. *Nutrition and Cancer* 65:255–262.
- Silaban, M., N. Herawati, and Y. Zalfiatri. 2017. The effect of adding bamboo shoot betung in manufacturing catfish (*Pangasius hypophthalmus*) nugget. *JOM Faperta* 4:1–13. [Indonesian]
- Sudarmadji, S., B. Haryono, and Suhardi. 2010. *Analysis Procedure of Food and Agriculture Products*. Liberty, Yogyakarta. [Indonesian]
- Sulistyowati, E., H. Hadi, Susetyowati, and A. Gunawan. 2008. Intake of commercial formula extract and diet snakehead filtrat intradialis as well and its effects on serum albumin and creatinin serum content at patient with hemolialisis in RSUD Anwar Malang. *Jurnal Gizi Klinik* 5:49–59. [Indonesian]
- Yuliani, Marwati, H. Wardana, A. Emmawati, and K. P. Candra. 2018. Characteristic of fish cracker with bone flour substitution of snakehead fish (*Channa striata*) as fortified calcium. *Jurnal Pengolahan Hasil Perikanan Indonesia* 21:259–266. [Indonesian]
- Yulianti, and A. K. Mutia. 2018. Protein analysis and preference level on snakehead fish nugget processed with addition of carrot flour. *Gorontalo Agriculture Technology Journal* 1:37–42. [Indonesian]

## AUTHOR GUIDELINES

### Term and Condition

1. Types of paper are original research or review paper that relevant to our Focus and Scope and never or in the process of being published in any national or international journal
2. Paper is written in good Indonesian or English
3. Paper must be submitted to <http://journal.trunojoyo.ac.id/agrointek/index> and journal template could be download here.
4. Paper should not exceed 15 printed pages (1.5 spaces) including figure(s) and table(s)

### Article Structure

1. Please ensure that the e-mail address is given, up to date and available for communication by the corresponding author
2. Article structure for original research contains

**Title**, The purpose of a title is to grab the attention of your readers and help them decide if your work is relevant to them. Title should be concise no more than 15 words. Indicate clearly the difference of your work with previous studies.

**Abstract**, The abstract is a condensed version of an article, and contains important points of introduction, methods, results, and conclusions. It should reflect clearly the content of the article. There is no reference permitted in the abstract, and abbreviation preferably be avoided. Should abbreviation is used, it has to be defined in its first appearance in the abstract.

**Keywords**, Keywords should contain minimum of 3 and maximum of 6 words, separated by semicolon. Keywords should be able to aid searching for the article.

**Introduction**, Introduction should include sufficient background, goals of the work, and statement on the unique contribution of the article in the field. Following questions should be addressed in the introduction: Why the topic is new and important? What has been done previously? How result of the research contribute to new understanding to the field? The introduction should be concise, no more than one or two pages, and written in present tense.

**Material and methods**, “This section mentions in detail material and methods used to solve the problem, or prove or disprove the hypothesis. It may contain all the terminology and the notations used, and develop the equations used for reaching a solution. It should allow a reader to replicate the work”

**Result and discussion**, “This section shows the facts collected from the work to show new solution to the problem. Tables and figures should be clear and concise to illustrate the findings. Discussion explains significance of the results.”

**Conclusions**, “Conclusion expresses summary of findings, and provides answer to the goals of the work. Conclusion should not repeat the discussion.”

**Acknowledgment**, Acknowledgement consists funding body, and list of people who help with language, proof reading, statistical processing, etc.

**References**, We suggest authors to use citation manager such as Mendeley to comply with Ecology style. References are at least 10 sources. Ratio of primary and secondary sources (definition of primary and secondary sources) should be minimum 80:20.

#### Journals

Adam, M., Corbeels, M., Leffelaar, P.A., Van Keulen, H., Wery, J., Ewert, F., 2012. Building crop models within different crop modelling frameworks. *Agric. Syst.* 113, 57–63. doi:10.1016/j.agsy.2012.07.010

Arifin, M.Z., Probowati, B.D., Hastuti, S., 2015. Applications of Queuing Theory in the Tobacco Supply. *Agric. Sci. Procedia* 3, 255–261. doi:10.1016/j.aaspro.2015.01.049

#### Books

Agrios, G., 2005. *Plant Pathology*, 5th ed. Academic Press, London.